

Treenah Scarf

By Megan Marshall



I love the ability of crochet to create beautiful openwork without the worry of missing or dropping a yarn over. For this pattern, the yarn is worked on a slightly larger hook than is recommended and a lovely open drapey fabric is created. The lattice pattern looked complicated in written form, but once charted is very easy, and you should be able to get in to a rhythm with it quickly.

Size

Finished item measures 140cm/56inches (158cm/63inches with fringe) long x 20cm/8inches wide

Requirements

Yarn: 3 balls Artesano Alpaca Inca Cloud (100% alpaca, 125m/50g) in colour: 508 Lilac

Hook: 4.5mm (G)

Notions: Tapestry Needle

Tension

20 sts and 8 rows = 10cm/4inches in Treble Crochet

Copyright 2010 Megan Marshall All rights reserved. Unauthorised reproduction strictly prohibited.

This pattern is for your personal, non-commercial use only. You may not reproduce this pattern for distribution, sale, or any other purpose. Finished items made from this pattern may not be sold under any circumstances.

Notes

This pattern uses **British** crochet terminology.

The pattern starts at the centre, and the first half is worked to the fringe edge. Re-join the yarn in the centre and work to the opposite fringe end. If you splice the ends together, you should have only two ends to run in once the scarf is completed.

When working the first row in to the foundation chain, I suggest working in to only one loop of the chain. I have found this a lot easier than struggling to go through both loops.

The lattice pattern repeat is 8+1 stitches. You could easily make this scarf narrower or wider by adding or removing pattern repeats. Your initial chain will need to be a multiple of 8+3. The 3 becomes your first stitch in treble crochet.

Abbreviations

ch = chain

tr = treble crochet

Instructions:

Make 43 ch

Skip 3, then work 1 tr in each stitch (41 sts). Turn work and make 3 ch (counts as first treble).

Work a further 26 rows of tr (approx 36cm/14")

Starting with row 1, work 6 rows of Chart A. The pattern marked out in red is the pattern repeat, which should be followed throughout the rows.

Note: Row 7 is a repeat of row 1 and is only shown in Chart A as a continuation of the next repeat.

Work a further 8 full repeats of this pattern.

Work row 7 as shown in Chart B. This will bring you back to the initial 41 stitches, and then work the 'grid' for the fringe.

Attach yarn at centre of scarf, and work second half of scarf as per first half, working the first row of tc back in to the original chain.

Finishing

Carefully wet block. Block lattice portion approx 2.5cm(1inch) wider than main portion, to counteract the tendency of the lattice to pull in and narrow the scarf. Cut 40 x 25cm(10inch) lengths of yarn and attach one piece per grid for fringe.

Copyright 2010 Megan Marshall All rights reserved. Unauthorised reproduction strictly prohibited.

This pattern is for your personal, non-commercial use only. You may not reproduce this pattern for distribution, sale, or any other purpose. Finished items made from this pattern may not be sold under any circumstances.

Chart A

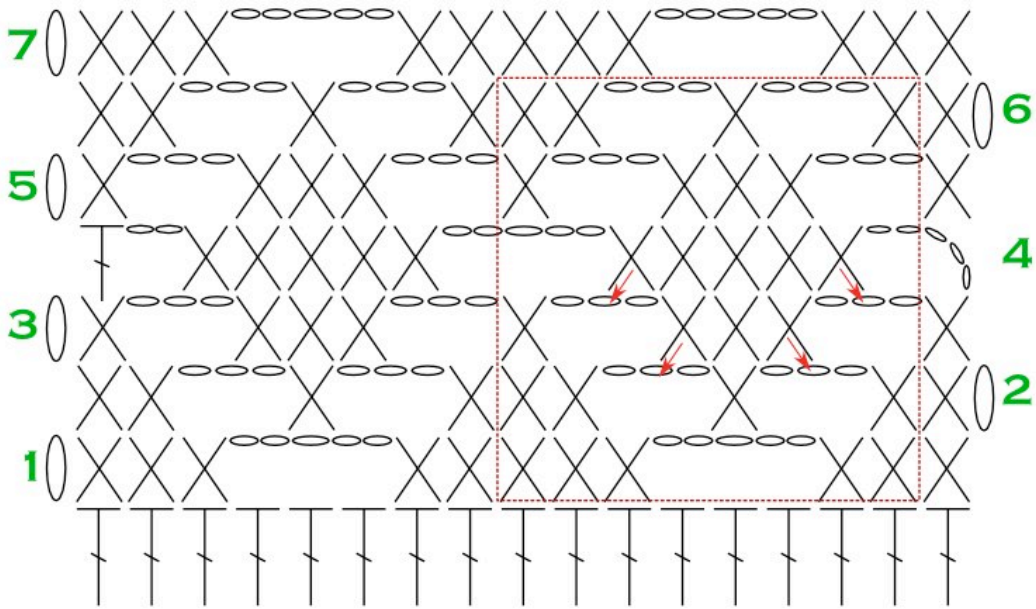
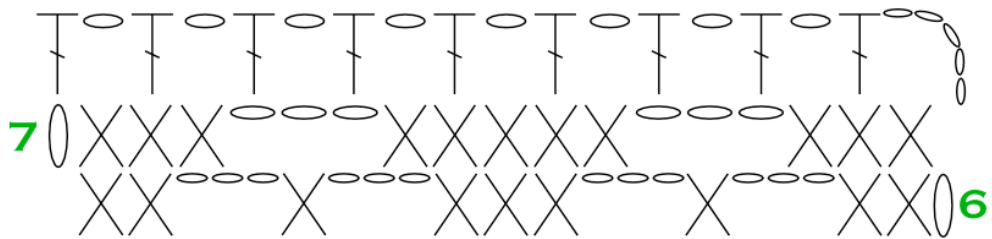






Chart B



-  Treble Crochet - TR
-  Double Crochet - DC
-  Chain - CH
-  Pattern repeat



Copyright 2010 Megan Marshall All rights reserved. Unauthorised reproduction strictly prohibited.
 This pattern is for your personal, non-commercial use only. You may not reproduce this pattern for distribution, sale, or any other purpose. Finished items made from this pattern may not be sold under any circumstances.